



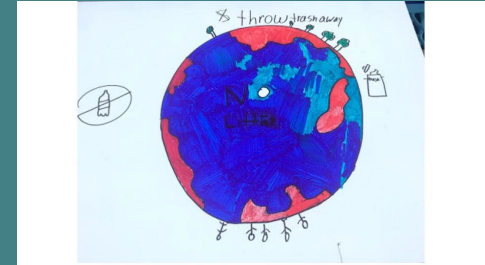
21st CCLC

Watershed STEM Education Partnership Grants

Bronwen Rice
B-WET National Program Coordinator
NOAA Office of Education

T'Noya Thompson
eeBLUE Consultant
NAAEE

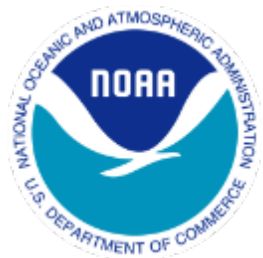
Informational Webinar for Potential Applicants
January 31st, 2024





OBJECTIVES OF THIS WEBINAR:

- ▶ Introduce the 2024 eeBLUE Watershed STEM (science, technology, engineering and mathematics) Education Partnership grants
- ▶ Review some important information about the current request for proposals.
- ▶ Answer questions from potential applicants



naaee
North American Association
for Environmental Education



eeBLUE WATERSHED STEM EDUCATION PARTNERSHIP GRANTS





WATERSHED STEM PARTNERSHIP GRANTS

- ▶ Competitive grants issued by NAAEE will fund experienced environmental education providers (NOAA partners) to connect with local 21st CCLC sites and deliver highly engaging STEM experiences.
- ▶ Projects will use the NOAA Bay-Watershed Education and Training ([B-WET](#)) Meaningful Watershed Educational Experience (MWEE) framework
- ▶ Competition information: [Website Link](#)

Nita M. Lowey 21st CENTURY COMMUNITY LEARNING CENTERS (21st CCLC)

- ▶ ED's 21st CCLC program provides academic enrichment opportunities during non -school hours for children, particularly students who attend high poverty and low -performing schools
- ▶ State education agencies conduct competitions to award 21st Century Community Learning Center grants.





NOAA

Bay Watershed
Education and
Training (B -WET)

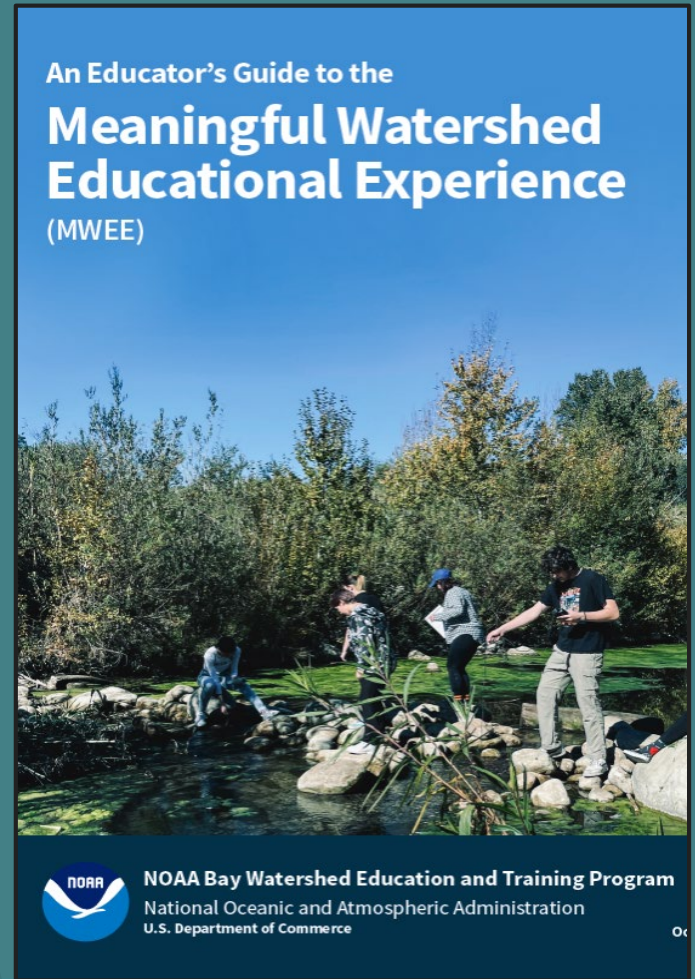
<https://www.noaa.gov/office/education/bwet>



What is a Meaningful Watershed Educational Experience (MWEE)?

The Meaningful Watershed Educational Experience (MWEE) is a learner-centered framework that focuses on investigations into local environmental issues and leads to informed action.

Learn more about the NOAA Bay WET MWEE:
<https://www.noaa.gov/education/explainers/noaa-meaningful-watershed-educational-experience>



WATERSHED STEM PROJECT ACTIVITIES

Will include:

eeBLUE Watershed STEM Education Partnership grant projects:

- ▶ are implemented as academic enrichment during non-school hours;
- ▶ use best practices for STEM education focusing on the environment as a core element of STEM investigations;
- ▶ address specific 21st CCLC site program objectives (such as increasing student engagement and achievement, supporting college and career readiness, responding to family members' needs)
- ▶ emphasize project based learning, maximize youth voice and empowerment, and include opportunities for student reflection and meaning-making;
- ▶ draw on NOAA scientific information and resources and MWEE best practices;
- ▶ engage students in hands-on environmental education opportunities that take place both outdoors and indoors;
- ▶ meet the student learning and staff capacity building needs of 21st CCLC program sites;
- ▶ include opportunities for mutual sharing of expertise between environmental education providers and 21st CCLC staff;
- ▶ ensure 21st CCLC staff support students' participation in the environmental education project; and
- ▶ promote student interest in STEM careers.

Project models may vary based on after-school vs. summer programming and in response to partner site needs, but a typical engagement is expected to be a minimum of 1-2 hours per week at each site over a 6 to 10 week period each year of project implementation.



PROGRAM GEOGRAPHY

California:

Mendocino, Sonoma, Napa, Marin, Solano, San Francisco, Contra Costa, Sacramento, San Mateo, Alameda, San Joaquin, Santa Cruz, Santa Clara, Monterey, San Benito, Merced, Madera, Fresno, San Luis Obispo, Tulare, Santa Barbara, Stanislaus County, and Ventura, CA.

Chesapeake Bay:

located in states that indicated support for the "Student Goal" (Meaningful Watershed Educational Experiences - MWEEs) as a part of the [Chesapeake Bay Agreement](#).

This includes all school districts (not only those in the Chesapeake Bay Watershed) in Delaware, District of Columbia, Maryland, Pennsylvania, and Virginia.

Great Lakes:

states of Illinois, Indiana, Michigan, Minnesota, New York, Ohio, Pennsylvania, and Wisconsin

Gulf of Mexico:

located in the states of Alabama, Florida, Louisiana, Mississippi, or Texas

Hawaii:

State of Hawaii

New England:

states of Connecticut, Maine, Massachusetts, New Hampshire, Rhode Island, or Vermont.

Pacific Northwest:

states of Oregon, Washington, or Alaska.





HOW TO FIND A 21st CCLC PARTNER

- ▶ Check with your [state 21st CCLC program](#) for information about current grantees
- ▶ Contact us if you have trouble finding information and we can try to help make connections





COMPETITION TIMELINE

January 29, 2024 – Request for proposals announced

March 29, 2024 – Request for proposals closes

April 1 - May 31, 2024 – Review and selection

June 1, 2024 – Funding decisions announced (anticipated)

July 1, 2024 – Funds available, earliest project start date

Projects should be planned for 18 months of implementation in 2024 and 2025. NAAEE anticipates funds will be available by **July 1, 2024**. All project activities should conclude by the end of the calendar year 2025 to allow for final reporting and evaluation activities to conclude in early 2026.

Two Pathways

Foundations

This pathway is intended for organizations seeking to **develop capacity** in out-of-school time environmental education and create **new partnerships** with 21st CCLC sites. Applicants to this pathway must demonstrate past experience implementing MWEEs in formal K-12 education as a B-WET grantee or partner. Experience working in out-of-school time is preferred but not required.

Extensions

Open to past recipients of Watershed STEM grants, this pathway is intended for organizations that want to **build on existing work and established partnerships**. Applicants should describe how the proposed project will leverage prior work and lessons learned to expand or further develop activities with 21st CCLC site partners.

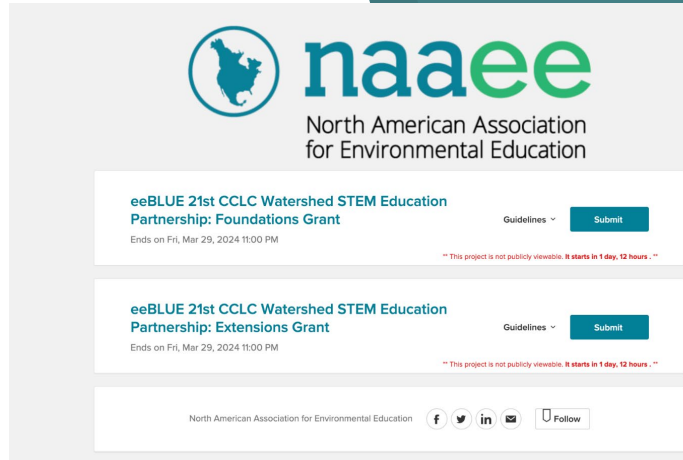
Submitting Your Proposal

Proposals must be submitted via the [NAAEE Submittable portal](#) by **Midnight EASTERN TIME, 3/29/24** . Please ensure that you select only **one** of the two pathways: Foundations or Extensions.

The proposal package must include:

- ✓ a detailed description of your project activities, specifically addressing how you will include STEM based environmental education incorporating MWEEs and support the priorities of your 21st CCLC site partners;
- ✓ a detailed description of project goals, deliverables, and how they will be accomplished, including a timeline and/or milestone chart;
- ✓ a budget table and budget narrative;
- ✓ a list of of planned 21st CCLC site partners; and
- ✓ letters of commitment from 21st CCLC site partner program directors and/or center/site coordinator(s).

Letters of collaboration from NOAA programs(s) and other major project partners are encouraged. Additional materials, such as curriculum or other documents, may be submitted but may not be reviewed.



Funding Amount

- ▶ Applicants may apply for a total request of up to **\$100,000**.
- ▶ **\$25,000** is the minimum that may be requested for partnerships with a single 21st CCLC site.
- ▶ Higher funding requests should reach multiple sites and/or demonstrate greater contact time or duration of project implementation at each site.
- ▶ Funding requested should be appropriate for the number of sites to be served with the proposed project model, and applicants should justify the scale of project implementation in their proposals.
- ▶ NAAEE aims to reach at least 40 21st CCLC sites each year through the portfolio of funded projects.



HOW PROJECTS WILL BE SELECTED

- ▶ NOAA partners will apply for funds from NAAEE
- ▶ During the application period NOAA partners will reach out to local 21st CCLC sites to develop projects
- ▶ Interested 21st CCLC sites will need to provide a letter of collaboration to accompany the NOAA partner application for funds
- ▶ Applications will go through a review process to assess the strength of the proposed project



Where to learn about past projects:

NAAEE Watershed STEM program website:

<https://naaee.org/programs/eeblue/21CCLC>

You for Youth partnership archive page: an online professional learning community that provides resources for afterschool educators, supported by the U.S. Department of Education. This archive has information about 2017 pilot project and 2020 program.

<https://y4yarchives.org/stemchallenge/noaa>

NOAA Nita M. Lowey 21st Century Community Learning Centers Watershed STEM Education partnership website:

https://www.noaa.gov/office_education/bwet/partnerships/21stCCLC



Get inspired by [eeBLUE's past initiatives](#) and achievements!





Questions?

- ▶ You may submit questions through the webinar
- ▶ Email us at eeBLUE@naaee.org for further questions and support!
- ▶ Q&A Session **February 29th, 3pm ET** . Register [here](#) .

FOR MORE INFORMATION

- ▶ Competition information:
<https://naaee.org/programs/eeblue/eeblue-watershed-stem-education-partnership-grant-program>
- ▶ You for Youth partnership page:
<https://y4yarchives.org/stemchallenge/noaa>
- ▶ NOAA MWEE Definition:
<https://www.noaa.gov/education/explainers/noaa-meaningful-watershed-educational-experience>
- ▶ Watershed Education Wonders Video (2021 -2023 Projects)
https://youtu.be/NY7dh_sdFLE?si=zoSvmBA41aIR25Bj
- ▶ Find out more about NAAEE's work on environmental literacy and environmental education: naaee.org



eeBLUE

CONTACT INFORMATION:

Contacts for additional questions,
comments, and feedback:

Bronwen Rice
NOAA Office of Education
Bronwen.Rice@noaa.gov

T'Noya Thompson
North American Association for Environmental
Education
tnoya@naaee.org

